

Just nominated for an Olivier Award for *It Is Easy To Be Dead*, our new season celebrates Canada's 150th birthday, alongside work from England, Scotland, Northern Ireland and Australia. To find out more or to join our new Friends Scheme, visit www.finboroughtheatre.co.uk
 – Neil McPherson, Artistic Director

ON SUNDAY AND MONDAY EVENINGS AND TUESDAY MATINEES

30 April, 1, 2, 7, 8, 9, 14, 15, 16 May 2017
 The English premiere

EVERYTHING BETWEEN US

by David Ireland
 Directed by Neil Bull



Set on Day One of the newly formed Truth and Reconciliation Commission for Northern Ireland, two sisters fight through decades of violence to discover if reconciliation is possible on the pathway to peace. An unflinching comedy from Northern Ireland's boldest contemporary writer.

28, 29, 30 May, 4, 5, 6, 11, 12, 13 June 2017
 The European premiere

FOOTPRINTS ON THE MOON

by Maureen Hunter
 Directed by Anastasia Osei-Kuffour



image ©Prathy

Joanie loves her home on the Canadian prairies. But her mum and her husband left her, and now her teenage daughter Carol-Ann wants to leave too – forcing Joanie to confront the loves and losses that have shaped her life. An award-winning play from one of Canada's most accomplished dramatists.

25, 26, 27 June, 2, 3, 4, 9, 10, 11 July 2017
 The first London production since 1950

MR GILLIE

by James Bridie
 Directed by Jenny Eastop



image ©Catherine Shelley

Another Finborough rediscovery from James Bridie. After the death of village headmaster William Gillie, his life is examined by a heavenly Procurator to see if he ever actually achieved anything during his time on Earth. A wry comedy exploring the impact one individual human life can have.

SATURDAY 6 MAY 9.45pm

The UK Premiere

SONGS IN THE KEY OF CREE

An evening of songs by multi-award-winning Cree-Canadian playwright, songwriter and pianist Tomson Highway, performed by Patricia Cano, Marcus Ali and Tomson Highway.



"Think Cole Porter and Kurt Weill...with Cree lyrics."

BOOKING INFORMATION

BOOK ONLINE

www.finboroughtheatre.co.uk

TELEPHONE BOOKING

0844 847 1652 Calls will cost 7ppm plus your network access charge
 No Booking Fees

PERFORMANCE TIMES AND PRICES

For *Late Company*, *Jam* and *Food*

Tuesday to Saturday evenings at 7.30pm.

Sunday matinees at 3.00pm.

Saturday matinees at 3.00pm (from the second week of each run).

Prices for Weeks One and Two

Tickets £16, £14 concessions, except:

Tuesday evenings £14 all seats

Friday and Saturday evenings £16 all seats.

Previews (first two performances of the run) £12 all seats.

£10 tickets for Under 30's for performances from Tuesday to Sunday of the first week when booked online only.

£12 tickets for residents of the Royal Borough of Kensington and Chelsea on the first Saturday evening of each run.

Prices for Weeks Three and Four

Tickets £18, £16 concessions, except:

Tuesday evenings £16 all seats

Friday and Saturday evenings £18 all seats.

For *Everything Between Us*, *Footprints On The Moon* and *Mr Gillie*

Sunday and Monday evenings at 7.30pm.

Tuesday matinees at 2.00pm.

Tickets £18, £16 concessions.

For *Songs In The Key Of Cree*

Saturday, 6 May at 9.45pm.

Tickets £18, £16 concessions.

Group Bookings - 1 free ticket for every 10 tickets booked.

We regret that tickets may not be exchanged or refunded, and latecomers cannot be admitted.

ACCESS For full information, visit www.finboroughtheatre.co.uk

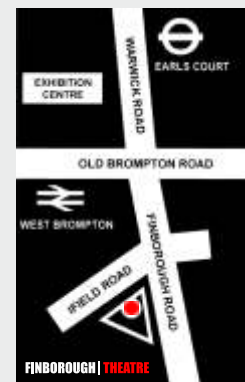
TRAVEL INFORMATION

The Finborough Theatre is located above The Finborough Arms, 118 Finborough Road, London SW10 9ED.

Earl's Court (District and Piccadilly Lines). Turn left from the Warwick Road exit, the theatre is five minutes walk straight along the road.

West Brompton (District Line and National Rail).

Buses 11, 14, 22, 74, 190, 328, C1, C3.
 Limited on-street parking in surrounding streets.

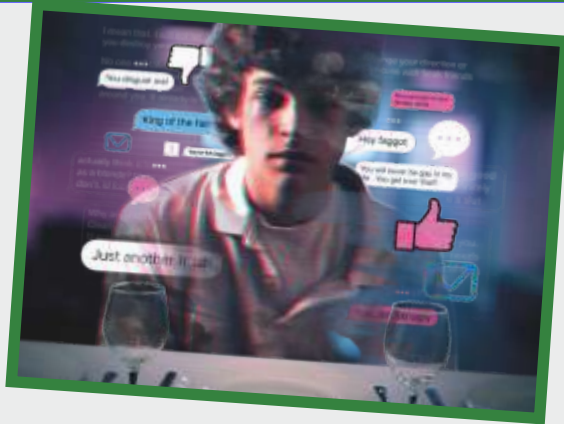


leaflet design | Rebecca Mahby



Spring - Summer Season
 April – July 2017

Tomson Highway in *Songs in the Key of Cree*



The European premiere

LATE COMPANY

by Jordan Tannahill
Directed by Michael Yale

One year after the suicide of their teenage son, Debora and Michael sit down to dinner with their son's bully and his parents.

Closure is on the menu, but accusations are the main course as good intentions are gradually stripped away to reveal layers of parental, sexual, and political hypocrisy – at a dinner party where grief is the loudest guest.

Written with sensitivity and humour, *Late Company* explores restorative justice, cyber bullying, and is both a timely and timeless meditation on a parent's struggle to comprehend the monstrous and unknown in their child.

Jordan Tannahill ("The hottest name in Canadian theatre" *Montreal Gazette*) makes his European debut at the Finborough Theatre.

Director **Michael Yale**'s production of *This Little Life of Mine* was multi-award-nominated for last year's Broadway World and OffWestEnd Awards including Best Direction.

The press on *Late Company*
"Searing, unforgettable drama." ★★★★★ *Torontoist*
"Excruciatingly good theatre: it feels like open heart surgery"
Vancouver Courier



image ©Rebecca Pitt

The world premiere

JAM

by Matt Parvin
Directed by Tommo Fowler

Ten years ago, Bella Soroush's life was ruined by one of her pupils – Kane McCarthy. She has gradually rebuilt things – new school, new town, new friends – and finally feels at home in the depths of the countryside.

Now Kane is back in her classroom, armed with relics of the past and claiming to want forgiveness. As the truths they've clung to begin to collapse, teacher and pupil are forced to confront their prejudices and the shared history that has bound them together.

A relentless, incendiary new drama that interrogates social fault-lines in Britain today, and the tension between truth and justice.

Playwright **Matt Parvin** makes his full length play debut at the Finborough Theatre.

Director **Tommo Fowler** returns to the Finborough Theatre following his acclaimed productions of *Obama-ology* and *I Wish To Die Singing*.

The press on director Tommo Fowler
"Terrific...Tommo Fowler's production has plenty of dash" Lyn Gardner, *The Guardian* on *Obama-ology*
"Searing...well acted...soberly directed by Tommo Fowler" Michael Billington, *The Guardian* on *I Wish To Die Singing*



The premiere production outside Australia

FOOD

by Steve Rodgers
Directed by Cressida Brown

Nancy left, choosing chaos, freedom and sex. Elma stayed behind and cooked. Now Nancy is back.

On a stretch of Australian highway, sisters Elma and Nancy run their family takeaway joint. As they quietly wage war with their past, a young life-loving Turkish traveller arrives, bringing a charm and sensuality that turns their world upside down.

Acclaimed Australian playwright **Steve Rodgers** makes his European debut at the Finborough Theatre.

Director **Cressida Brown**'s extensive credits include *Walking The Tightrope* and the multi-award-nominated *Amphibians*.

The press on playwright Steve Rodgers
"Intimate and involving theatre" *The Sydney Morning Herald*
"A robust meal...warm, substantial, and completely delicious."
Australian Stage

The press on director Cressida Brown's production of *Amphibians*
"Cressida Brown's direction makes it extraordinary" Susannah Clapp, *The Observer*
"Terrific...imaginative." Lyn Gardner, *The Guardian*